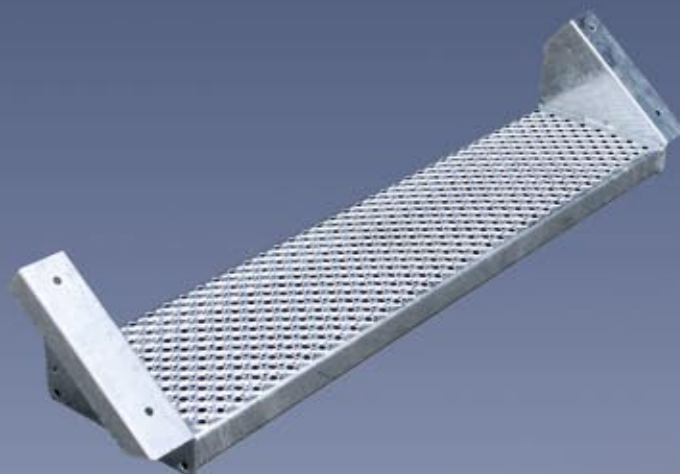
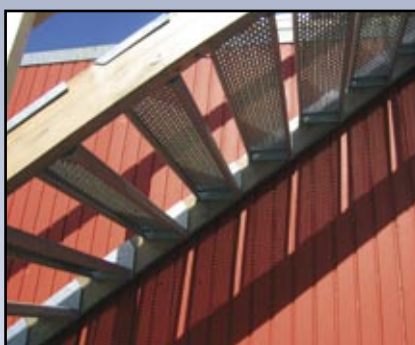




PcP. Stair treads type O2-Build™



For temporary staircases on construction sites

- Easily mounted on standard timber boards
- The stair treads can be used for several staircases - just replace the stringers.
- High strength to weight ratio
- Smooth edges preventing injury to hands, heels and achilles tendons
- Slip resistant surface
- A very flexible solution
- Based on our patented stair tread O2 Achil®

One step ahead...

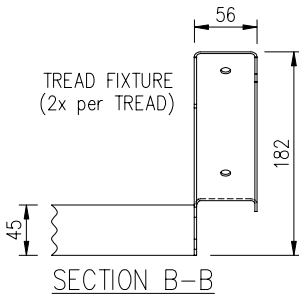
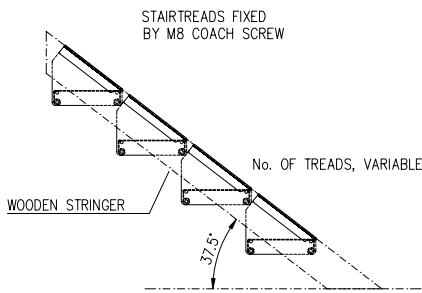
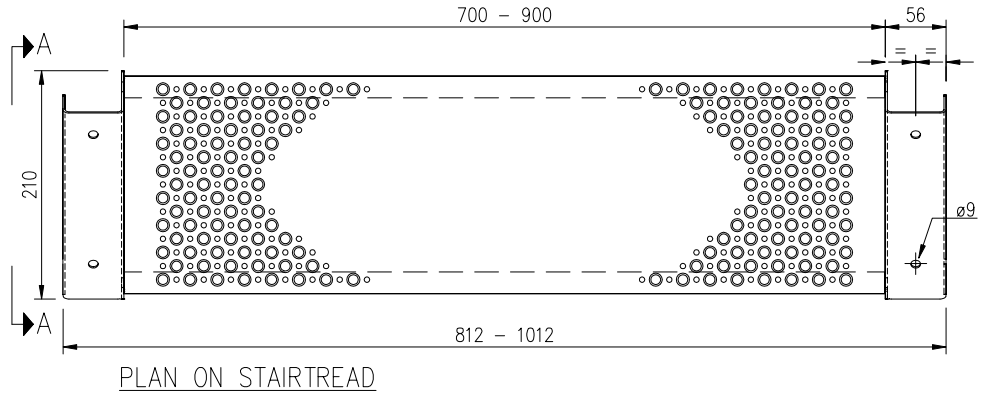
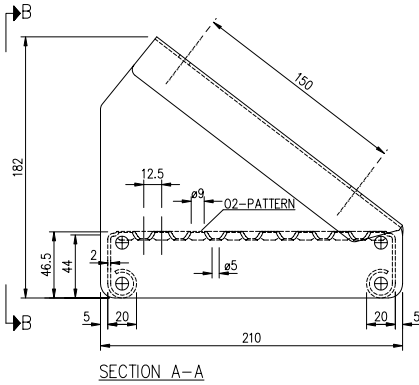
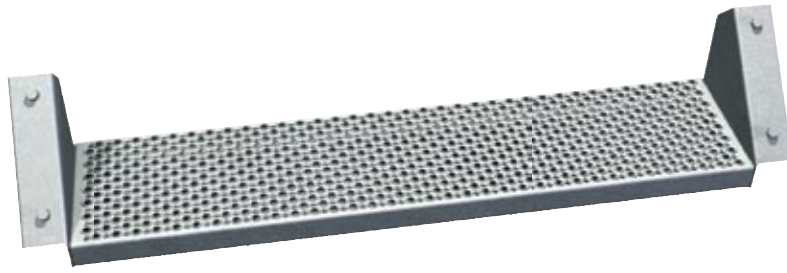
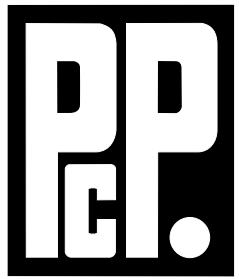


A/S Maskinfabrikken PcP.
Sverigesvej 2-4
DK-7480 Vildbjerg
Tel: +45 9713 1200 . Fax: +45 9713 3523
Email: sales@pcp.dk . www.pcp.dk

Member of



PcP. Stair treads type O2-Build™



PcP. stair tread type O2-Build™ is based on our patented type O2 Achil® and designed for easily mounting on timber/wooden stringers.

Type O2-Build™ can be mounted on 2" x 4"-10" x length (50 x 100-250 x length mm) standard timber boards with 4xM8 screws*.

The stair treads are made to fit an angle of 37,5°.

The rise between the stair treads can be 185- 225 mm depending on the height of the staircase and the length of the stringers.

Material: Mild steel, Hot dipped galvanised according to DS/BS EN 1461

Standard sizes - O2 Achil® stair treads

Width	Length	Height	Weight
200	700	45	4,2
200	800	45	4,8
200	900	45	5,3
200	1000	45	5,9
200	1200	57	7,7

All dimensions in mm, weight in kg.

Other dimensions are available on request

PcP. stair treads type O2-Build fulfils the requirements from EN 12811 Temporary Works Equipment. Stairway class B. Load class 6.

* Fastener size is a recommendation only. The purchaser of the tread is fully responsible for selecting the means of fastening and the correct quality of timber to ensure a sound structure.



A/S Maskinfabrikken PcP.

Sverigesvej 2-4

DK-7480 Vildbjerg

Tel: +45 9713 1200 . Fax: +45 9713 3523

Email: sales@pcp.dk . www.pcp.dk

Member of

